

# Board Presentation

February 27, 2017

# Growth Projections

	2015-16			2016-17			2017-18			2018-19			2019-20			2020-21		
	Low	Mid	High	Low	Mid	High	Low	Mid	High	Low	Mid	High	Low	Mid	High	Low	Mid	High
Grade 9	390	401	415	407	427	438	422	448	451	410	434	449	436	456	469	397	425	436
Grade 10	368	385	403	381	396	414	395	421	437	413	443	457	399	429	450	427	451	469
Grade 11	377	397	401	357	377	398	369	387	409	382	408	429	400	430	447	387	420	444
Grade 12	318	335	351	363	389	395	346	366	396	358	377	401	370	396	420	387	418	440
<b>Total</b>	<b>1,454</b>	<b>1,518</b>	<b>1,570</b>	<b>1,508</b>	<b>1,589</b>	<b>1,645</b>	<b>1,532</b>	<b>1,623</b>	<b>1,694</b>	<b>1,563</b>	<b>1,663</b>	<b>1,737</b>	<b>1,606</b>	<b>1,712</b>	<b>1,786</b>	<b>1,598</b>	<b>1,714</b>	<b>1,789</b>

- Student Population Projection 2020-2021: 1,714 Students
- Student Population Projection 2025-2026: 1,950 Students
- Student Population Projection 2030-2031: 2,166 Students
- Student Population Projection 2035-2036: 2,367 Students

# School Capacity

Total Learning Spaces	107	107
Maximum Capacity / Room	32	32
Preferred Classroom Capacity	25	30
Capacity at 100% Utilization	2675	3210
Capacity at 85% classroom utilization	2274	2729
Capacity at 75% classroom utilization	2006	2408
Capacity at 65% utilization	1739	2087

# High School Expansion: Preferred Alternative 3a

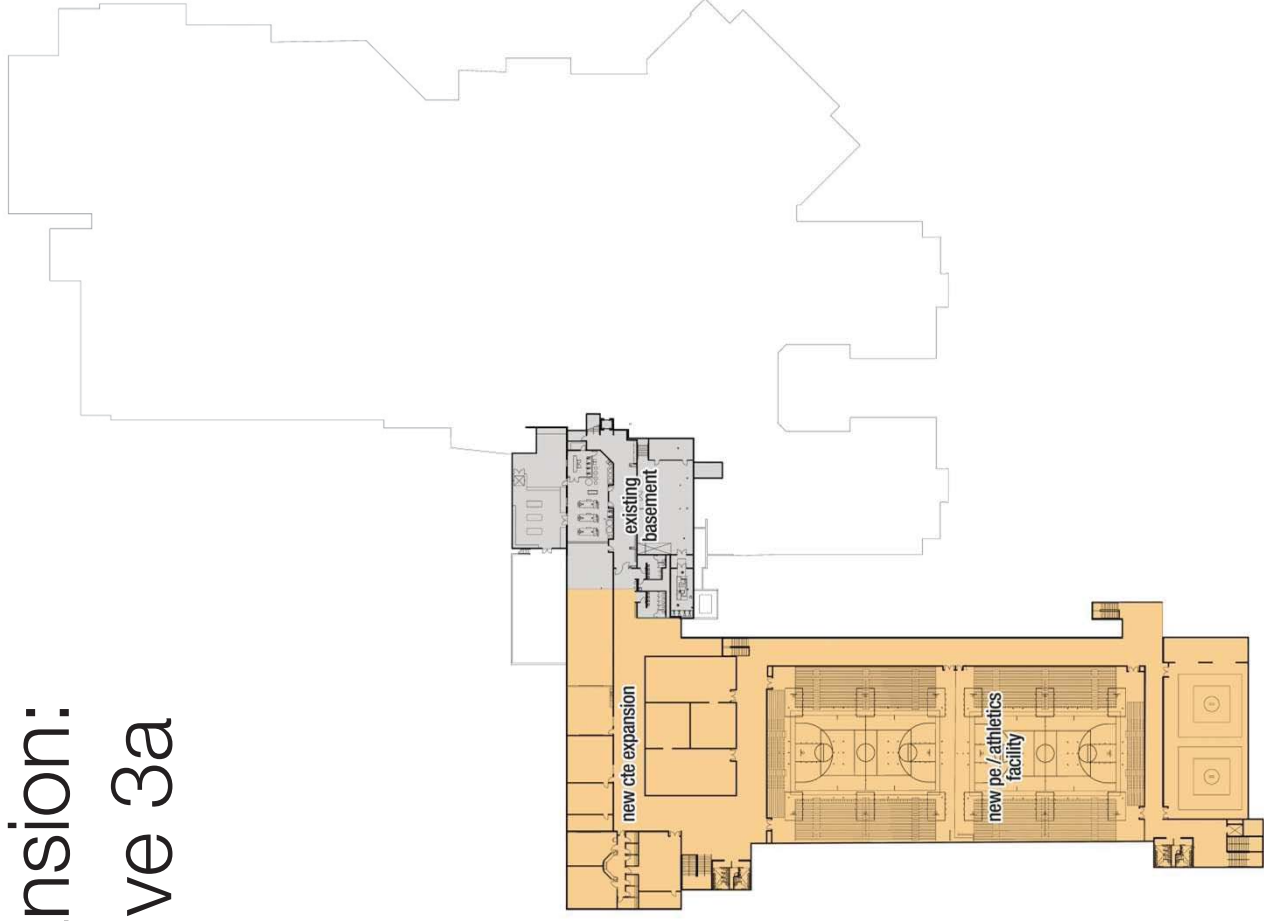


LEGEND: ■ EXISTING BUILDING ■ NEW CONSTRUCTION

SITE PLAN — OPTION 3A  
Park City High School | Park City, Utah



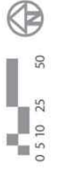
# High School Expansion: Preferred Alternative 3a



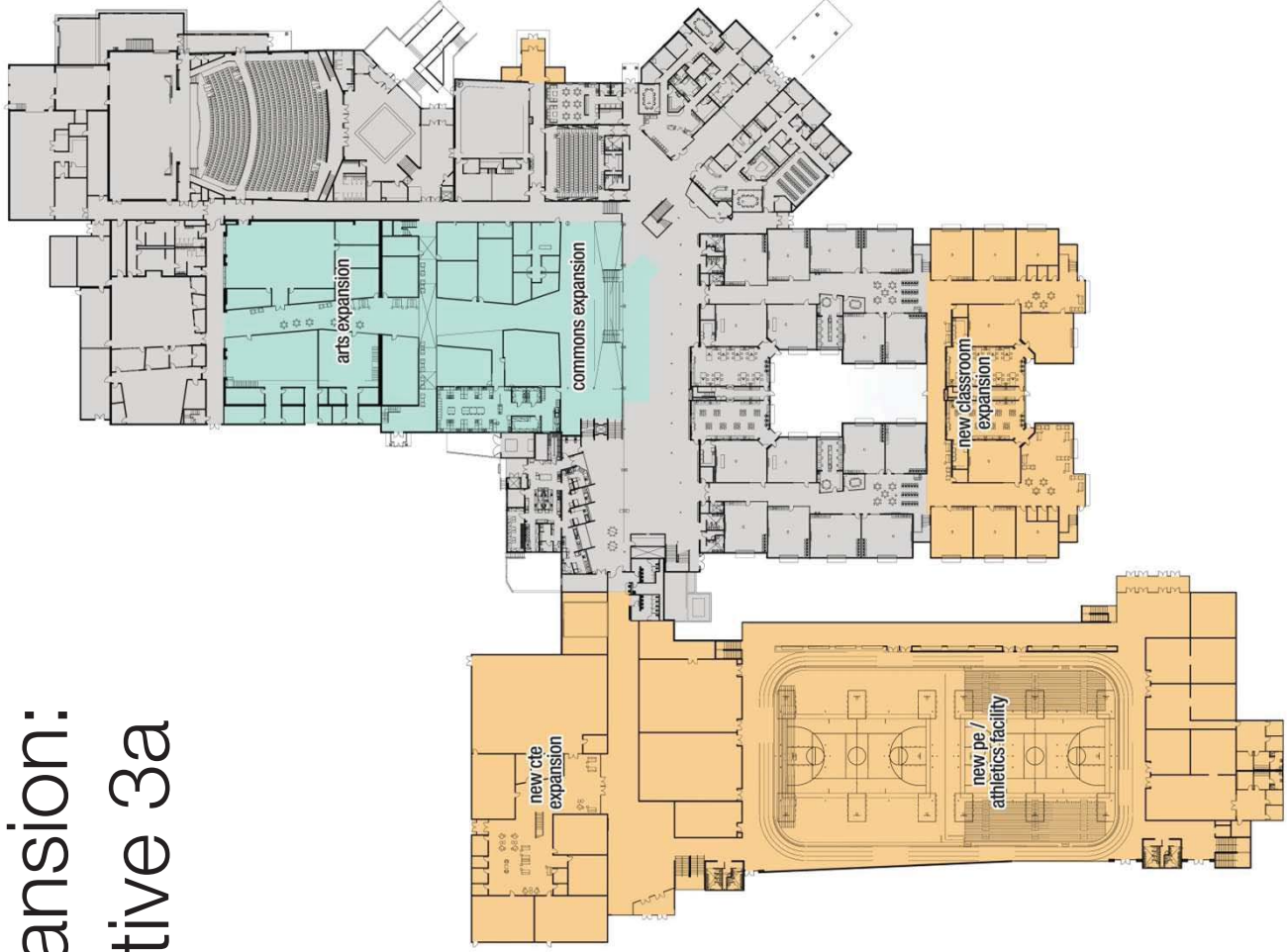
BASEMENT FLOOR PLAN — OPTION 3A  
Park City High School | Park City, Utah



LEGEND: ■ EXISTING ■ RENOVATION ■ NEW BUILD



# High School Expansion: Preferred Alternative 3a



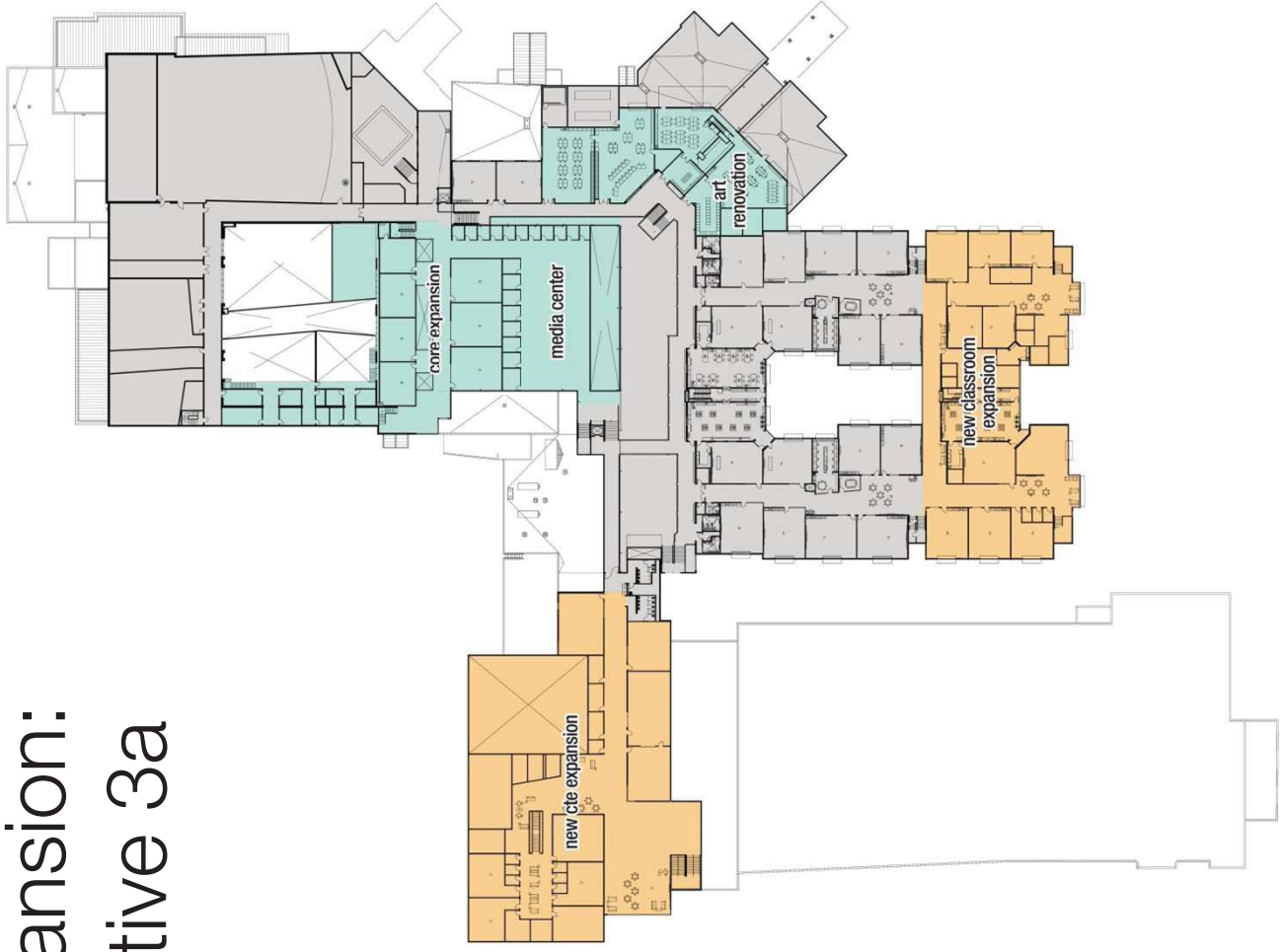
LEGEND

- EXISTING
- RENOVATION
- NEW BUILD

LEVEL ONE FLOOR PLAN — OPTION 3A  
Park City High School | Park City, Utah



# High School Expansion: Preferred Alternative 3a



LEGEND:

- EXISTING
- RENOVATION
- NEW BUILD

LEVEL TWO FLOOR PLAN — OPTION 3A  
Park City High School | Park City, Utah





# High School Expansion: Preferred Alternative 3a

- Key Considerations:
  - No development to the east
  - Reduced impact on Lucky John
  - Consolidate PE and athletic facilities
  - Separate event facilities
    - Improved site functionality
  - More centralized and contiguous core classrooms



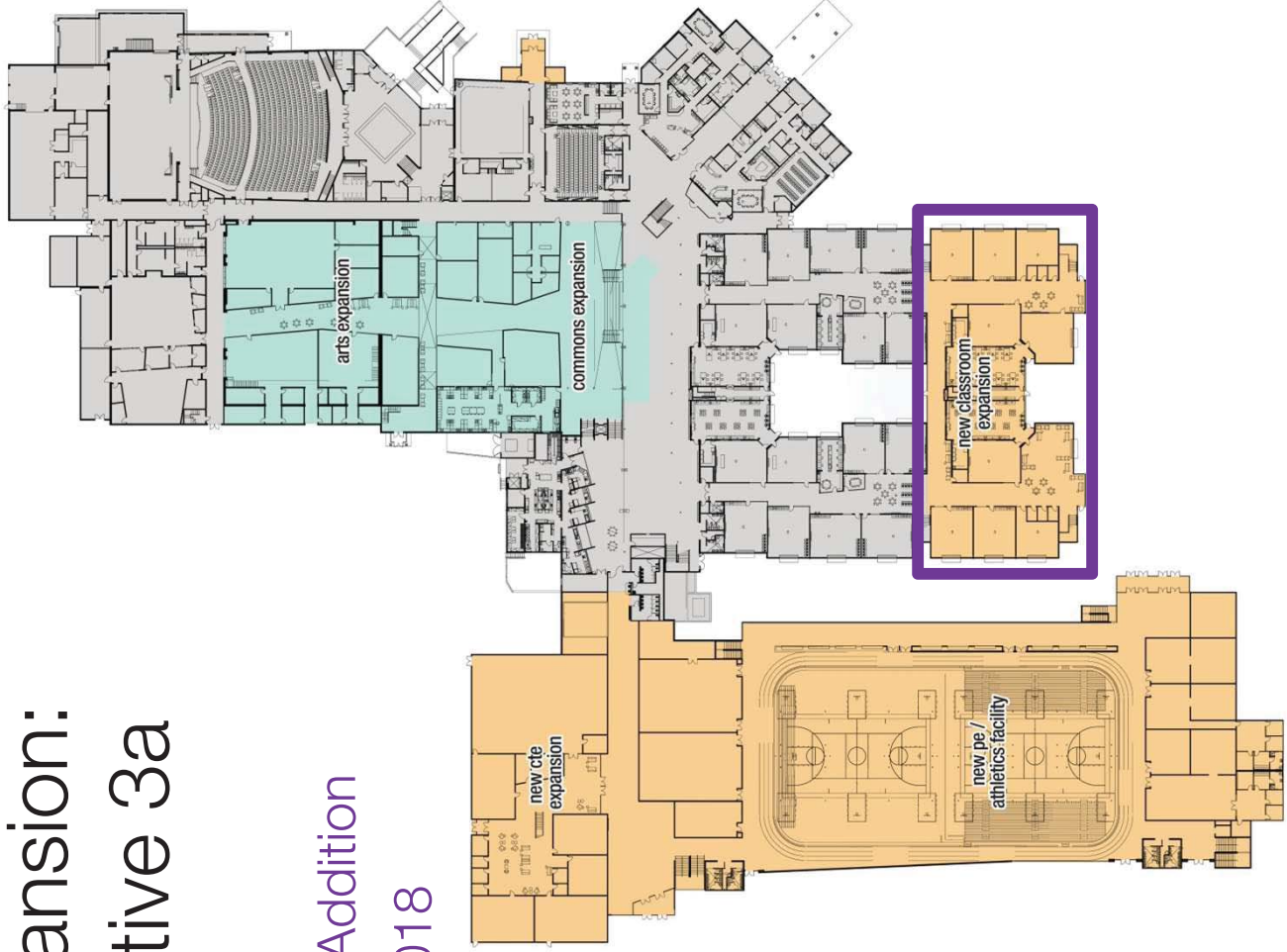
# High School Expansion: Preferred Alternative 3a

Area Summary	Gross Building Area
New Construction	209,230 SF
Renovation	72,265 SF
Existing Building	149,265 SF
<b>Total Educational Area</b>	<b>430,760 SF</b>
<b>Total Educational Area / Student</b>	<b>216 SF (at a 2,000 student capacity)</b>
Existing Eccles Center and Support*	41,235 SF
<b>Total Building Area</b>	<b>471,995 SF</b>

\* Includes the Eccles Center, scene shops, green room, circulation and upper level storage and mezzanine access – non educational area.

# High School Expansion: Preferred Alternative 3a

- Schedule Impacts:
  - Phase I – 9<sup>th</sup> Grade Addition
  - Complete August 2018

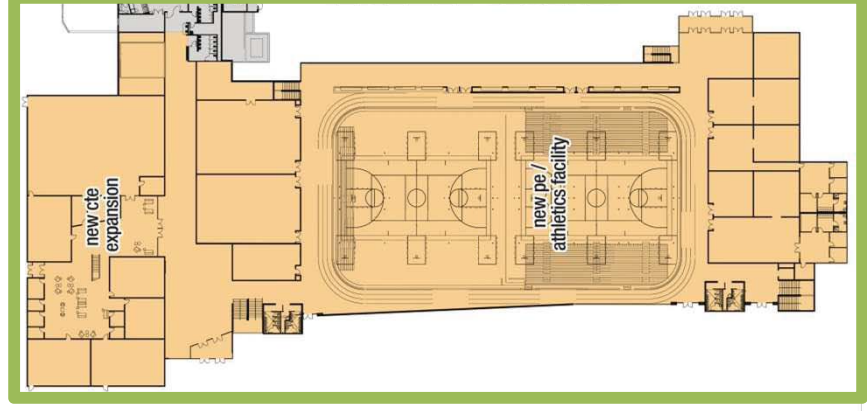


LEGEND: ■ EXISTING ■ RENOVATION ■ NEW BUILD



# High School Expansion: Preferred Alternative 3a

- Schedule Impacts:
  - Phase II – Athletics / CTE Addition
  - Complete December 2019



LEGEND

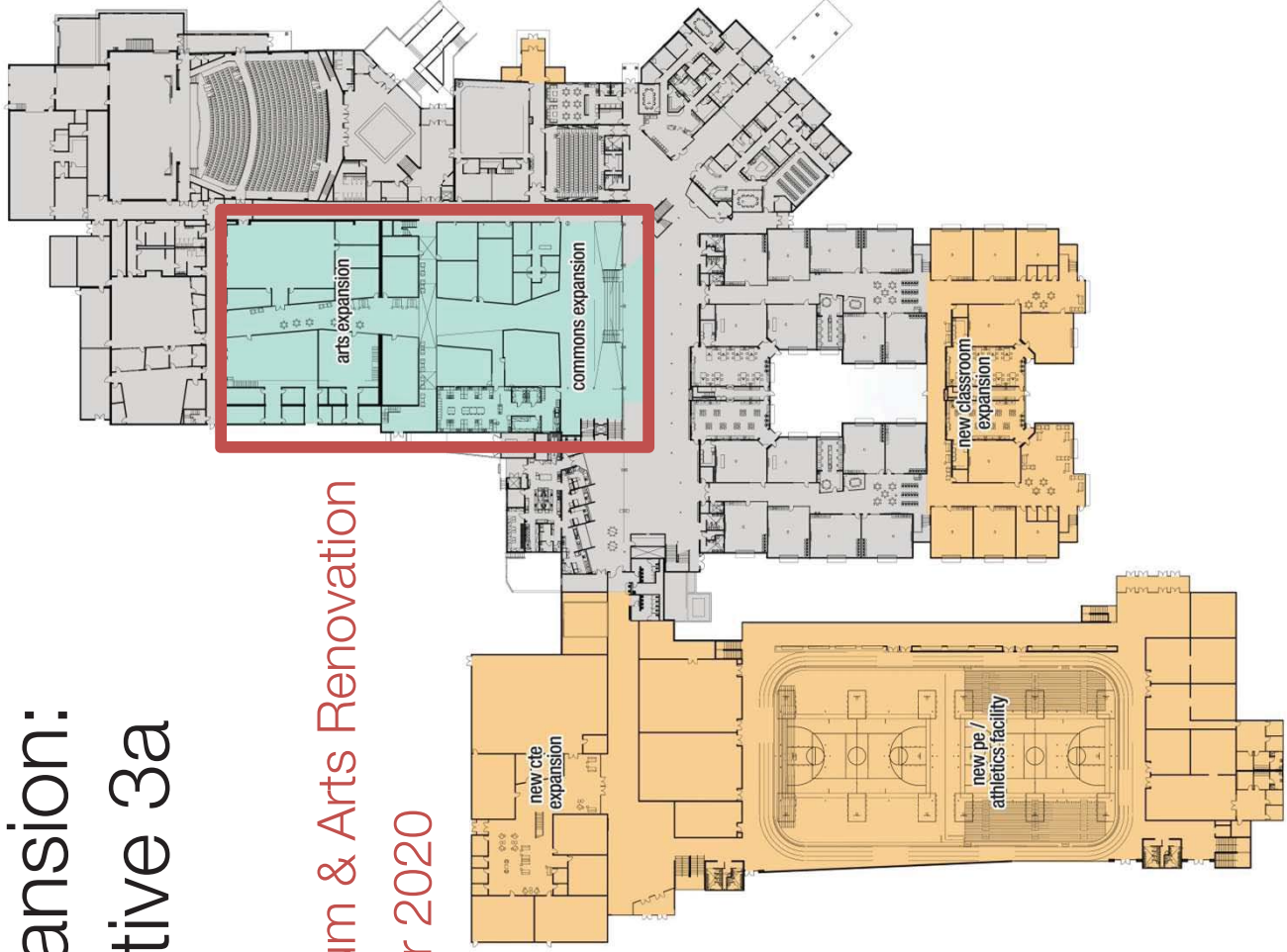
- EXISTING
- RENOVATION
- NEW BUILD

LEVEL ONE FLOOR PLAN — OPTION 3A  
Park City High School | Park City, Utah



# High School Expansion: Preferred Alternative 3a

- Schedule Impacts:
  - Phase 3 – Gymnasium & Arts Renovation
  - Complete December 2020



# High School Expansion: Preferred Alternative 3a

Area	Quantity	Unit	Cost / SF	Total
9th Grade Addition	41,801	SF	210.00	\$8,778,210
CTE Addition	76,984	SF	210.00	\$16,166,640
Athletics Addition	90,443	SF	210.00	\$18,993,030
North Gym Remodel - Performing Arts Level 1	14,815	SF	110.00	\$1,629,650
North Gym Remodel - Performing Arts Level 2	3,230	SF	175.00	\$565,250
South Gym Core Classrooms - Level 1	24,630	SF	110.00	\$2,709,300
South Gym Core Classrooms, Media Center - Level 2	20,329	SF	175.00	\$3,557,575
Art Room Remodel - Level 2	9,262	SF	110.00	\$1,018,820
<b>Total Construction Cost*</b>	<b>281,494</b>	<b>SF</b>		<b>\$53,418,475</b>
Soft Cost				15%
Portable Classroom Cost				\$2,000,000
<b>Total Project Cost</b>				<b>\$64,768,385</b>

\* Construction cost includes energy efficient systems and photovoltaic array costs