

**Resolution No. 08-14**

**RESOLUTION ADOPTING A CITY PROPERTY DISPOSITION LIST**

WHEREAS, the City owns numerous properties with possible uses and/or development potential that may be utilized to attain community goals;

WHEREAS, ongoing strategic planning of municipal assets is in the best interest of the public;

WHEREAS, City Council's goal for an engaged and informed citizenry is a product of transparent government and public notification;

WHEREAS, the growing demand for City services is subject to continual evaluation of asset management.

NOW, THEREFORE BE IT RESOLVED by the City Council of Park City, as follows:

**SECTION 1. CITY PROPERTY DISPOSITION LIST.** Park City adopts the 'Property disposition list' as attached hereto as Exhibit A.

This Resolution hereby constitutes public notice that the properties listed herein are intended for sale if so noted and the City Council may meet in closed session as allowed by state law to discuss the best possible terms of a potential sale. Any final approval of a sale by the City Council must be done at a regular, open meeting.

**SECTION 2. EFFECTIVE DATE.** This Resolution shall take effect upon adoption.

PASSED AND ADOPTED this 17th day of April, 2014.

PARK CITY MUNICIPAL CORPORATION

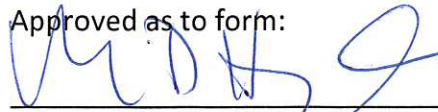
  
Mayor Jack Thomas

Attest:



Marci Heil, City Recorder

Approved as to form:



Mark D. Harrington, City Attorney



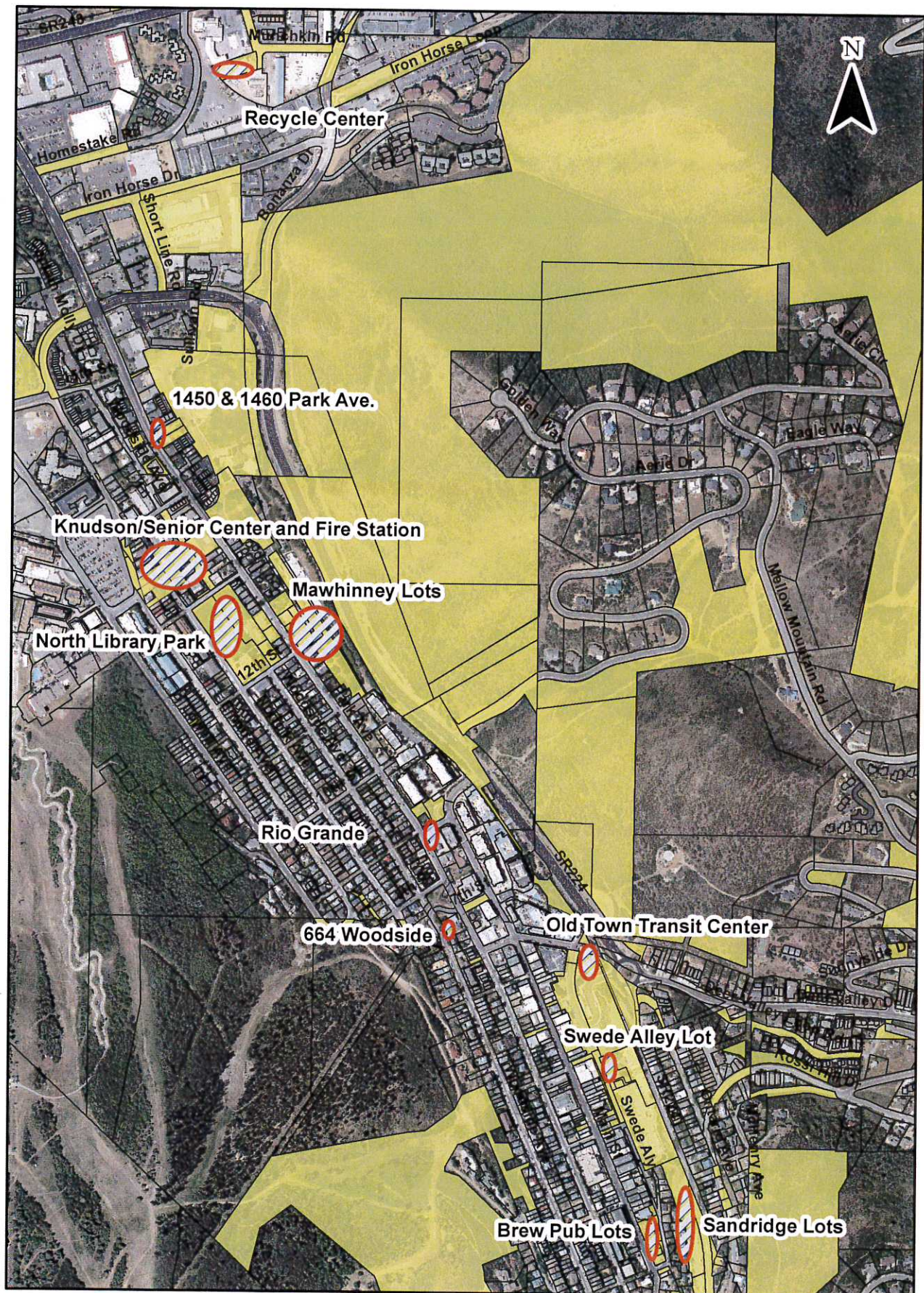
## 2014 City Property Disposition Resolution

Property/Parcels/Acres	Potential Use
<b>Bango-Wortley/Gordo Parcels</b> PC-9-95-X, PC-9-95-M-X, PC-9-95-J-X, PC-9-95-F-X, PC-9-95-G-X, PC-9-95-H-X, PC-9-95-L-X, PC-9-95-K-X, PC-9-95-1-X, PC-9-95-B-X (approx. 14 acres)	Hold/Sell/Trade; PW Storage; Municipal Facility; Inside Soils Ordinance
<b>664 Woodside</b> NGS-2-X (.06 acre)	Hold/Trade/Sell; Affordable Housing
<b>Park and Ride</b> SS-87 (16.25 acres)	Recreation; City Facilities
<b>Brew Pub Parking Lots</b> PC-263-X, PC-264-1-X, PC-265-X, PC-266-X, PC-563-X (.5 acre)	Hold/Trade/Sell; Parking; Park; Inter-modal municipal oriented transit, Housing (Gondola); Inside Soils Ordinance
<b>Old Town Transit Center</b> Marsac Transit Center Sub., PC-476-A-X, PC-476-B-X, PC-730-B-X, PC-426-X (approx. 4 acres)	Inter-modal transit oriented use (gondola, multi-modal transportation/housing); Inside Soils Ordinance
<b>SR-224 Kiosk</b> (.44 acres)	Trailhead Parking
<b>Mawhinney Lots</b> SA-369-X, SA-370-X, SA-371-X, SA-372-X, SA-360-A (1.5 acre)	Skate Park; Parking; City Park; Affordable Housing; Inside Soils Ordinance
<b>Swede Alley Surface Lot</b> MPS-3-AM-X (.4 acre)	Hold/ Sell/Trade; Parking; Park; Inside Soils Ordinance
<b>Triangle Parcel</b> SS-57-1-B-X (111 acres)	Hold/Sell/Trade; PW Facility; Open Space; Municipal Facility; Recycle Center
<b>Rio Grande Depot</b> SA-398-X (.01 acre)	Hold/Sell/Trade; Pedestrian Facility; Parking; Inside Soils Ordinance
<b>North 40 Parking area</b> PCA-98-C-1-X (73 acres)	Recreation, Parking
<b>IHC Lot 5</b> IHPCMC-5-2AM-X (15 acres)	Hold/Sell/Trade; Recreation; Trails, City Facilities
<b>Naniola/Kivett</b> SS-29-C-X, SS-21-A-X (60 acres)	Hold/Sell/Trade
<b>North Library</b> SA-68-X, SA-72-X (2.5 acres)	Park, Recreation, Affordable Housing
<b>1353 &amp; 1333 Park Ave. Fire Station/Miners Hospital/City Park</b> SA-273-X (.5 acre)	Hold/Sell/Trade; Lower RDA Plan Development; partially inside soils ordinance
<b>Knudson</b> (portions of SA-200, SA-201, SA-202-A-1) 14,624 sq/ft. per purchase agreement)	Hold/Sell/Trade; Lower RDA Plan Development
<b>1361 Woodside Ave. Senior Center and parking</b> SA-265-A-X (1.5 acres)	Hold/Sell/Trade; Lower RDA Plan Development
<b>1450 &amp; 1460 Park Ave. Co-Housing</b>	Hold/Sell/Trade; Co-Housing Project; Affordable Housing; Inside Soils Ordinance
<b>1951 Woodbine Way Recycling Center</b> SS-224-X (.5 acre)	Hold/Sell/Trade; Bonanza Park Redevelopment; Inside Soils Ordinance
<b>Pace Parcels</b> SS-28-A-1-X, SA-28-A-X (110 acres)	Hold/Sell/Trade; Open Space; Recreation; Snow Storage; Municipal Facility; Agricultural
<b>Sandridge Parcels</b> PC-730-2-X, PC-730-G-X (2 acres)	Hold/Sell/Trade; Parking; Gondola Base; Inside Soils Ordinance

PC Heights Parcel (24 acres)	Hold/Sell/Trade; Open Space; Recreation; Snow Storage; Agricultural
------------------------------	---



# 2014 City-Owned Disposition Properties I

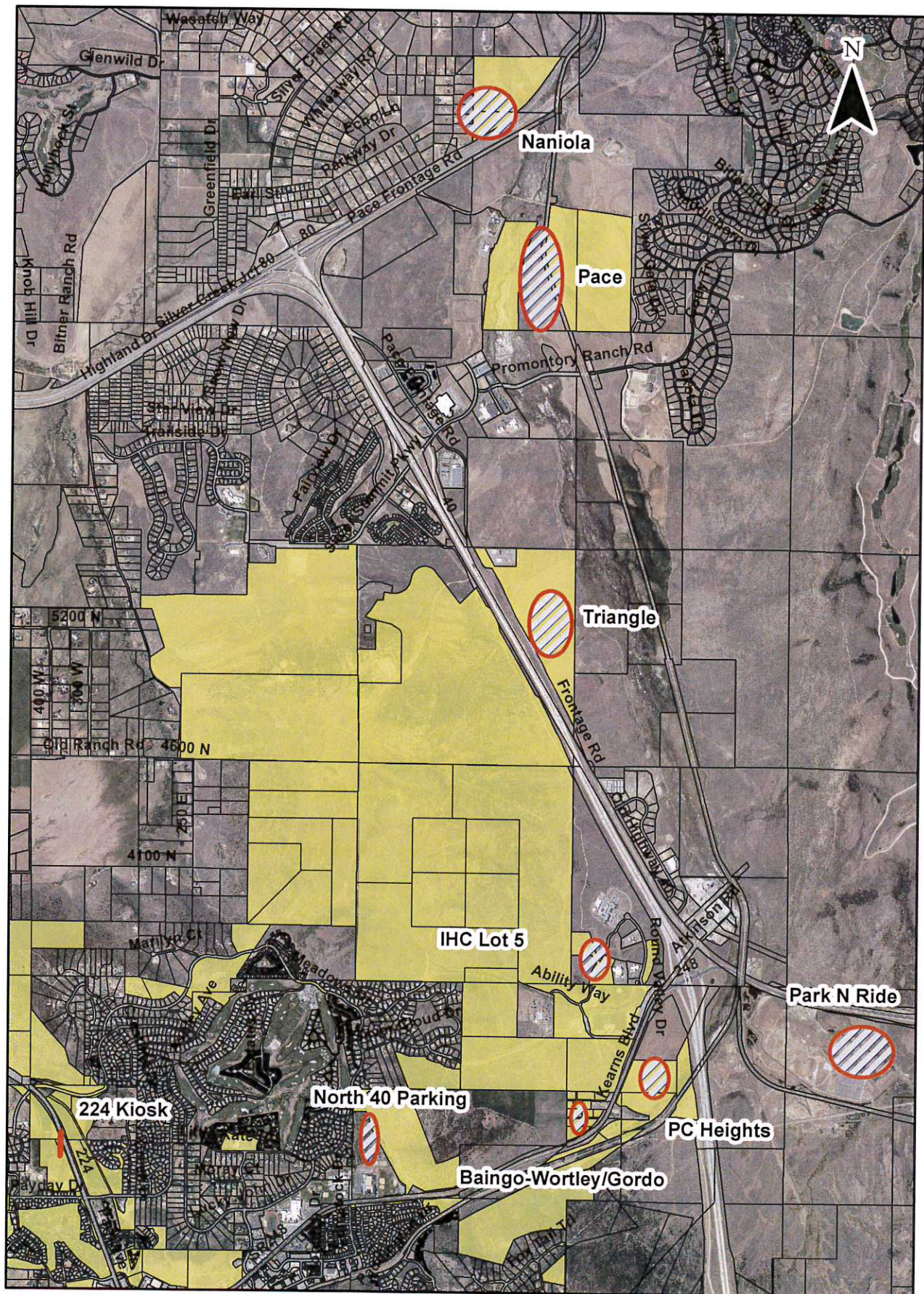


0 0.075 0.15 0.3 Miles





# 2014 City-Owned Disposition Properties II



0 0.325 0.65 1.3 Miles